



# ZFYVE19 Polyclonal Antibody

<b>Catalog No</b>	YP-Ab-02170
<b>Isotype</b>	IgG
<b>Reactivity</b>	Human;Rat;Mouse;
<b>Applications</b>	WB;IHC;IF;ELISA
<b>Gene Name</b>	ZFYVE19
<b>Protein Name</b>	Zinc finger FYVE domain-containing protein 19
<b>Immunogen</b>	The antiserum was produced against synthesized peptide derived from human ZFYVE19. AA range:311-360
<b>Specificity</b>	ZFYVE19 Polyclonal Antibody detects endogenous levels of ZFYVE19 protein.
<b>Formulation</b>	Liquid in PBS containing 50% glycerol, 0.5% BSA and 0.02% sodium azide.
<b>Source</b>	Polyclonal, Rabbit,IgG
<b>Purification</b>	The antibody was affinity-purified from rabbit antiserum by affinity-chromatography using epitope-specific immunogen.
<b>Dilution</b>	WB: 1/500 - 1/2000. IHC: 1/100 - 1/300. ELISA: 1/40000.. IF 1:50-200
<b>Concentration</b>	1 mg/ml
<b>Purity</b>	≥90%
<b>Storage Stability</b>	-20°C/1 year
<b>Synonyms</b>	ZFYVE19; MPFYVE; Zinc finger FYVE domain-containing protein 19; MLL partner containing FYVE domain
<b>Observed Band</b>	50kD
<b>Cell Pathway</b>	Cytoplasm, cytoskeleton, microtubule organizing center, centrosome . Cleavage furrow . Midbody, Midbody ring . Localizes mainly on centrosomes in interphase and early mitosis. Localizes at the cleavage furrow and midbody ring in late mitosis and cytokinesis. .
<b>Tissue Specificity</b>	Detected in brain, heart, skeletal muscle, kidney and liver.
<b>Function</b>	disease:A chromosomal aberration involving ZFYVE19 is associated with acute myeloblastic leukemia (AML). Translocation t(11;15)(q23;q14) with MLL/HRX.,PTM:Phosphorylated upon DNA damage, probably by ATM or ATR.,similarity:Contains 1 FYVE-type zinc finger.,tissue specificity:Detected in brain, heart, skeletal muscle, kidney and liver.,
<b>Background</b>	disease:A chromosomal aberration involving ZFYVE19 is associated with acute myeloblastic leukemia (AML). Translocation t(11;15)(q23;q14) with MLL/HRX.,PTM:Phosphorylated upon DNA damage, probably by ATM or ATR.,similarity:Contains 1 FYVE-type zinc finger.,tissue specificity:Detected in brain, heart, skeletal muscle, kidney and liver.,



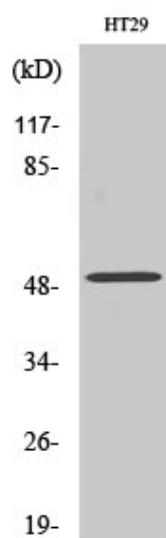
### matters needing attention

Avoid repeated freezing and thawing!

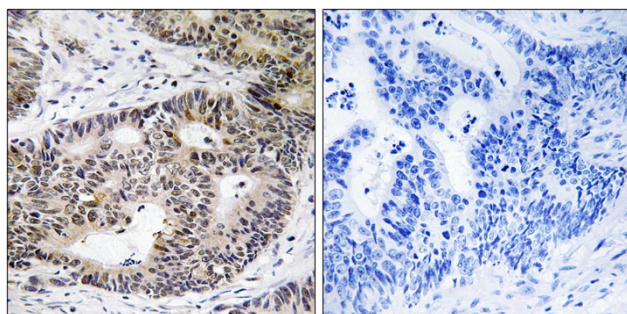
### Usage suggestions

This product can be used in immunological reaction related experiments. For more information, please consult technical personnel.

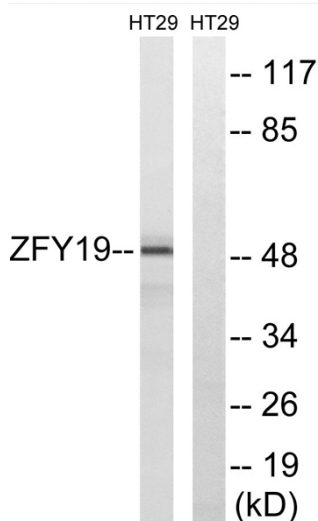
## Products Images



Western Blot analysis of various cells using ZFYVE19 Polyclonal Antibody. Secondary antibody(catalog#:RS0002) was diluted at 1:20000



Immunohistochemistry analysis of paraffin-embedded human colon carcinoma tissue, using ZFYVE19 Antibody. The picture on the right is blocked with the synthesized peptide.



Western blot analysis of lysates from HT-29 cells, using ZFYVE19 Antibody. The lane on the right is blocked with the synthesized peptide.